



## 6 Grangeway

Thundersley, Benfleet, SS7 3RP

£1,695 PCM

Nestled in the charming area of Grangeway, Thundersley, Benfleet, this delightful end-terrace house offers a perfect blend of comfort and convenience. With three spacious double bedrooms, including a main bedroom featuring fitted wardrobes, this property is ideal for families or those seeking extra space.

The heart of the home is a well-appointed white fitted kitchen, complete with an oven and hob, making it a joy for any aspiring chef. The inviting lounge boasts patio doors that open directly into the rear garden, creating a seamless connection between indoor and outdoor living. This space is perfect for entertaining guests or enjoying quiet evenings with family.

Additionally, the property includes a downstairs cloakroom for added convenience, ensuring that guests and residents alike have easy access to facilities. Parking is a breeze with space for two vehicles, and the inclusion of a garage provides further storage options or potential for a workshop.

EPC band D - council tax band C

### Viewing

Please contact our Sandringham Office on 01702 551455 if you wish to arrange a viewing appointment for this property or require further information.

- Three double bedrooms one with fitted wardrobes
- Newly fitted bathroom
- White fitted kitchen
- Downstairs cloakroom
- Garage and off street parking for two cars



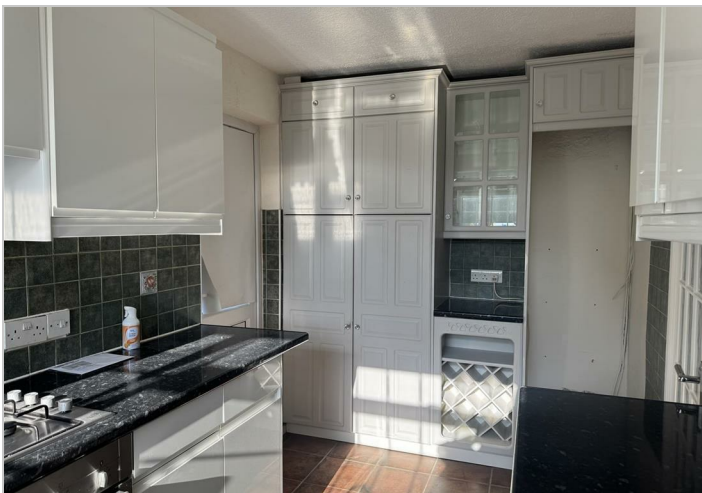
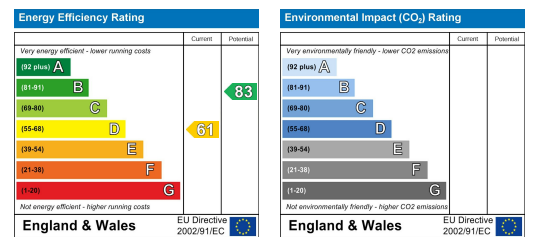
## Floor Plan



## Area Map



## Energy Efficiency Graph



These particulars, whilst believed to be accurate are set out as a general outline only for guidance and do not constitute any part of an offer or contract. Intending purchasers should not rely on them as statements of representation of fact, but must satisfy themselves by inspection or otherwise as to their accuracy. No person in this firm's employment has the authority to make or give any representation or warranty in respect of the property.